



REKSA DANA BNP PARIBAS INFRASTRUKTUR PLUS - 28 March 2014

ABOUT US

PT BNP Paribas Investment Partners is a leading investment management firm in Indonesia who has been managing client portfolios in Indonesia since 1992. PT BNPP-IP is a part of unified global organization of BNP Paribas Group. PT BNPP-IP consists of investment professionals who are competent in their fields and serves diversified client base. Our range of investment solutions are adapted constantly to changing markets and client needs. For further details about PT BNPP-IP, visit our website at <http://www.bnpparibas-ip.co.id>. Total Asset Under Management and advise as of February 2014 : IDR 35.33 trillion.

INVESTMENT OBJECTIVE

To provide optimal return on long term investments through investments majority in stock or equities related to infrastructure theme.

Money Market	: 0.00 % - 20.00 %
Equity	: 80.00 % - 100.00 %
Benchmark	: Composite index of JAKBIN, JAKFIN, JAKINFR, JAKMINE, and JAKMIND

FUND INFORMATION

Type	: Equity fund
Launch Date	: 15 March 2007
Custodian Bank	: Citibank, N.A.
Fund Size	: IDR 2,704.64 Billion
Fund Currency	: Indonesian Rupiah
Dealing/Valuation	: Daily
Price (NAV/unit)	: IDR 2,754.69

Management Fee	: Max. 2.50% p.a.
Custodian Fee	: Max. 0.25% p.a.
Selling Agent Fee	: N/A
Subscription Fee	: Max. 2.00% per transaction
Redemption Fee	: Max. 1.25% per transaction
Switching Fee	: Max. 1.00% per transaction

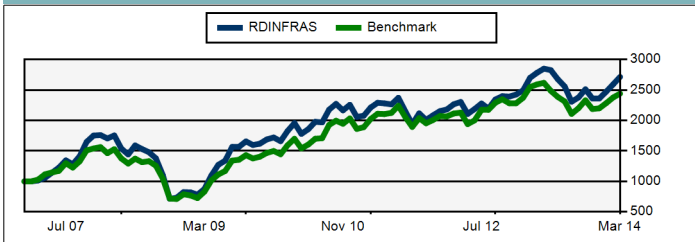
ASSET CLASS BREAKDOWN

Breakdown	
Equity	87.78 %
Bonds	0.00 %
Money Market (Cash, TD, SBI)	12.22 %

5 Largest Holdings (alphabetical)

Astra International Tbk PT
Bank Central Asia Tbk PT
Bank Mandiri Persero Tbk PT
Bank Rakyat Indonesia
Telekomunikasi Indonesia Tbk PT

HISTORICAL PERFORMANCE



Historical Return (%)

	MoM	3Mo	6Mo	YoY	YTD	3Yr*	5In*
RDINFRAS	4.72	15.00	14.20	-2.41	15.00	7.06	15.48
Benchmark	2.68	10.96	10.88	-5.82	10.96	5.34	13.47

*3 Year and Since Inception figures annualized

Investment Risks

- Risk of changes in economic condition and politics
- Risk of decrease in participating unit's value
- Liquidity risk
- Default risk

Please refer to the prospectus for further information on the investment risks.

Disclaimer

MUTUAL FUND INVESTMENTS CONTAIN RISK. PROSPECTIVE INVESTORS MUST READ AND COMPREHEND THE PROSPECTUS PRIOR TO INVESTING IN MUTUAL FUND. PAST PERFORMANCE DOES NOT REPRESENT FUTURE PERFORMANCE.

This material is issued and has been prepared by PT. BNP Paribas Investment Partners a member of BNP Paribas Investment Partners (BNPP IP)**.

This material is produced for information purposes only and does not constitute:

(i) an offer to buy nor a solicitation to sell, nor shall it form the basis of or be relied upon in connection with any contract (ii) or commitment whatsoever or any investment advice.

This material makes reference to certain financial instruments (the "Financial Instrument(s)") authorized and regulated in its/their jurisdiction(s) of incorporation.

No action has been taken which would permit the public offering of the Financial Instrument(s) in any other jurisdiction, except as indicated in the most recent prospectus, offering document or any other information material, as applicable, of the relevant Financial Instrument(s) where such action would be required, in particular, in the United States, to US persons (as such term is defined in Regulation S of the United States Securities Act of 1933). Prior to any subscription in a country in which such Financial Instrument(s) is/are registered, investors should verify any legal constraints or restrictions there may be in connection with the subscription, purchase, possession or sale of the Financial Instrument(s).

Investors considering subscribing for the Financial Instrument(s) should read carefully the most recent prospectus, offering document or other information material and consult the Financial Instrument(s)' most recent financial reports. The prospectus, offering document or other information of the Financial Instrument(s) are available from your local BNPP IP correspondents, if any, or from the entities marketing the Financial Instrument(s).

Opinions included in this material constitute the judgment of PT. BNP Paribas Investment Partners at the time specified and may be subject to change without notice. PT. BNP Paribas Investment Partners is not obliged to update or alter the information or opinions contained within this material. Investors should consult their own legal and tax advisors in respect of legal, accounting, domicile and tax advice prior to investing in the Financial Instrument(s) in order to make an independent determination of the suitability and consequences of an investment therein, if permitted. Please note that different types of investments, if contained within this material, involve varying degrees of risk and there can be no assurance that any specific investment may either be suitable, appropriate or profitable for a client or prospective client's investment portfolio.

Given the economic and market risks, there can be no assurance that the Financial Instrument(s) will achieve its/their investment objectives. Returns may be affected by, amongst other things, investment strategies or objectives of the Financial Instrument(s) and material market and economic conditions, including interest rates, market terms and general market conditions. The different strategies applied to the Investment Products may have a significant effect on the results portrayed in this material. Past performance is not a guide to future performance and the value of the investments in Financial Instrument(s) may go down as well as up. Investors may not get back the amount they originally invested.

The performance data, as applicable, reflected in this material, do not take into account the commissions, costs incurred on the issue and redemption and taxes.

* PT BNP Paribas Investment Partners (address: World Trade Center Building, 5th Floor, Jl. Jend Sudirman Kav.29-31, Jakarta 12920 - INDONESIA).

** "BNP Paribas Investment Partners" is the global brand name of the BNP Paribas group's asset management services. The individual asset management entities within BNP Paribas Investment Partners if specified herein are specified for information only and do not necessarily carries on business in your jurisdiction. For further information, please contact your locally licensed Investment Partner.